

REPERTOIRE

Newsletter of The Hobart Repertory Theatre Society JUNE JULY 2015

Jane Eyre

Hobart Repertory Theatre Society
In Special Arrangement with Penguin Classics
proudly presents one of the world's most beloved novels.

Written by Charlotte Brontë Adapted by Polly Teale Directed by Jagrit Gaskin Designed by William Howard

19 June - 4 July, 2015

Wed - Sat 8pm
Matinee
Sun 12.30pm
Sun 4 July 2pm

Book at
www.hobartrepertory.com.au
or call 0334 5998

The PLAYHOUSE THEATRE
www.playhouse.org.au

Penguin Classics

Hobart

THE
PLAYHOUSE
THEATRE
106 Bathurst Street, Hobart

FROM THE PRESIDENT

I can vividly remember reading and studying *Jane Eyre* when I was at school. It was always one of my favourite books. It is a timeless piece of literature. I wish the cast and crew of this classic play a successful and enjoyable season and thank them for all their hard work.

The Bar has now been completed. It is so lovely to have a piece of the theatre's history reused. The timber was the original stage floor. Thank you Matthew for organising the building of the bar.

Thank you to everyone who took the time to fill in and return the dinner questionnaire.

I took the results into consideration when booking a venue for this year's dinner.

The results of the questionnaire are featured in this newsletter. In choosing a date I needed to also take into consideration the dates of future productions for this year.

The dinner will be held at the Motor Yacht club of Tasmania in Lindisfarne on 12th September.

Invitations with details will be sent out in the next few weeks. In the meantime put the date in your diary. I hope to see you there.

Regards to all,

Liz

Liz Lewinski

President



Rep
Dinner
2011

Dear fellow Rep Members,

Thank you for taking the time to fill out the dinner questionnaire. There were 69 questionnaires returned. Some people chose to respond as a couple. You will notice that that people chose not to respond to all statements, just the ones they felt were relevant to them.

| Type & cost of meal | Yes | No | Don't mind |
|--|------------|-----------|-------------------|
| The cost of the dinner is a major contributing factor in deciding if I attend or not. 69 replies | 22/69 | 17/69 | 30/69 |
| I would prefer a sit down served dinner. 50 replies | 16/50 | 4/50 | 30/50 |
| I like buffet style dinners. 52 replies | 25/50 | 7/50 | 20/50 |
| I am happy with alternate drop menu if it means keeping costs down. 58 replies | 20/58 | 20/58 | 18/58 |
| Timing of event | | | |
| The time of the year matters. 55 replies | 25/55 | 9/55 | 21/55 |
| I like the dinner towards the end of the year (October/November). 55 replies | 30/55 | 8/55 | 17/55 |
| I like midyear dinners (June/July). 52 replies | 17/52 | 14/52 | 21/52 |
| Type of event | | | |
| Having dancing and live music is a major contributing factor in deciding if I attend or not. 64 replies | 18/64 | 21/64 | 25/64 |
| I like the idea of having fellow Rep members entertain by means of a skit or song. 64 replies | 48/64 | 4/64 | 12/64 |
| If we have a band I would want the music to start after dinner. 58 replies | 36/58 | 2/58 | 20/58 |
| I like the idea of fun/nonsense awards. 60 replies | 36/60 | 5/60 | 19/60 |
| I like the idea of serious awards. 60 replies | 24/60 | 14/60 | 22/60 |
| Having a raffle adds to the fun. 57 replies | 21/57 | 9/57 | 27/57 |
| I like themed dinners. 57 replies | 16/57 | 23/57 | 18/57 |
| If we have themed dinners I like to have a parade to show costumes. 58 replies | 12/58 | 26/58 | 20/58 |
| I like the idea of a bush dance/dinner 58 replies | 12/58 | 26/58 | 20/58 |

NEXT AT THE PLAYHOUSE: JANE EYRE

Written by Charlotte Brontë, Adapted by Polly Teale, Directed by Ingrid Ganley (pictured, right)



When Charlotte Brontë sat down to write *Jane Eyre*, she didn't know she was writing a major work of literature. The gothic novel about a governess's romance with the brooding Mr. Rochester was an instant classic in its time and is still much loved today, 168 years later. After all, who can resist a tale featuring a madwoman locked in an attic?

The cast and crew of *Jane Eyre* have been hard at work on Polly Teale's inspiring and arresting theatrical adaptation of the novel .

Director Ingrid Ganley says she is keen for Hobartians to read – or re-read – the novel, which follows the journey of unlikely heroine Jane Eyre from unwanted orphan to courageous and independent young woman.

“As it is such a classic novel, we will be holding a Q&A session to discuss the story with the cast and crew after the show at our two Wednesday performances on 24 June and 1 July.”

The story of Jane Eyre has been thrilling readers for more than a century. It follows Jane Eyre as she leaves behind a destitute childhood and finds work as a governess, only to fall in love with her employer, the unattainable Mr Rochester. Amid rumours of a mysterious presence at Thornfield Hall, Jane embraces love on her terms and finds her own unique voice.

Hobart Rep's production stars Olivia Durst as Jane Eyre and Jeff Keogh as Rochester, supported by the talents of local actors Steven Jones, Kathy Spencer, Meredith McQueen, Matt Wilson, Selina Ross, Samantha Lush, Tess Hatfield and Kate Hurford.

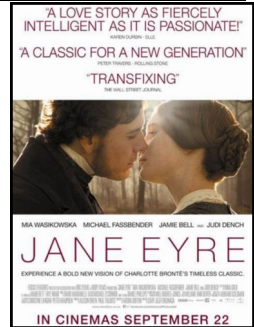
Did you know that in 1846, Anne, Emily, and Charlotte published a poetry book under the pseudonyms Acton, Ellis, and Currer Bell. They knew they would be taken more seriously if the public believed that they were men. Charlotte also published *Jane Eyre* under the name Currer Bell. When it became a bestseller, the literary world became consumed with learning more about the mysterious Bell brothers.

In Charlotte's own words when going to London to meet the publishers "Neither Mr. Smith nor Mr. Williams knew we were coming—they had never seen us—they did not know whether we were men or women, but had always written to us as men. "Is it Mr. Smith?" I said, looking up through my spectacles at a tall young man. "It is". I then put his own letter into his hand directed to Currer Bell. He looked at it and then at me again. "Where did you get this?" he said. I laughed at his perplexity—a recognition took place. I gave him my real name: Miss Brontë".

JANE EYRE RUNS FROM JUNE 19 TO JULY 4



Jane Eyre has had many adaptations over the years including a new filmed version (right) with Aussie actress Mia Wasikowska and Michael Fassbender who was recently in Tasmania.



Rehearsals photos by Steven Jones and Jeff Kogh

LOST PROPERTY AT THE PLAYHOUSE

The 'found' property collection in the box office at the theatre is mounting up, with umbrellas, scarves, prescription glasses amongst other items. Members who find they may have left something at the theatre should AS SOON AS POSSIBLE either ring the box office number (03 6232 1536) to leave a message for me OR email me at 'secretary@playhouse.org.au'; in both situations, leave your name, contact detail, the date of the performance attended and if possible, the seat number. Tony Webb Secretary



Submissions are NOW OPEN for OneFest 2015

We're excited to announce that submissions are now open for OneFest 2015.

OneFest Directors Vik Croall and Carolyn Whamond have today announced that "One Fest entries have opened and will be accepted until Friday 31 July 2015."

"OneFest will have three sessions starting with the Friday evening, the second as a Saturday matinee and, the third and final session on the Saturday evening", they said. OneFest aims to provide an eclectic mix of plays under 30 minutes. Anyone above the age of 16 can enter OneFest – it's a great opportunity for emerging actors and directors to get experience on and off stage, and experienced actors/directors enjoy being able to display their skills in a short-work format.



2014 OneFest Winners

With the recent success of one act festivals such as Short+Sweet we're expecting a bumper crop of enthusiastic participants with some amazing works. Make sure you get your application in because places are limited. Go to www.onefest.com.au to download information and application forms.

OneFest
hobart's one act play festival

Fri 4 & Sat 5 September 2015
Playhouse Theatre, Hobart

Entries close Friday 31 July • Get your act together!



STUDENT TICKETS for SPECIFIC PERFORMANCES

We have amended the special arrangement for STUDENT TIX at specific performances to alleviate the possibility of no seat availability. The special student ticket packages are available for the first Saturday, first Wednesday & Thursday in each show's season; the price is \$15 per head and individual students can, on production of their student ID card, purchase tix at the box office for the noted performances. **HOWEVER, group bookings** (ie 4 or more) **MUST** be pre-booked either through the Secretary at 'secretary@playhouse.org.au' with no booking fee **OR** at Centertainment, where a booking fee of \$3.90 per ticket on top of the ticket price applies, again on production of a student ID card. Our experience with sold out houses for 'A Murder Is Announced' has shown us that sufficient seats may not be available if

purchasing for a group at the box office on the night of the performance.

LIFE MEMBERSHIP NOMINATIONS FOR HOBART REP.

Any current member may nominate someone who meets the criteria for nomination by completing a nomination form available from the Secretary, Tony Webb. The criteria are:-

1. The nominee is to have been, and may still be, an active participant, having made a substantial contribution in more than one area relating to the objectives of Hobart Repertory, be it as a volunteer backstage, front of house, in wardrobe, the archive or similar, a member of a committee, a player on stage, a sponsor etc.
2. The length of time involved should exceed 15 years.
3. The nominee should be of good character, remain so and be an asset to the general theatre community.

Nominations forms will be received at any time & considered by the Board; nominators will be notified of the outcome of deliberations. For forms, contact the Secretary by post at Bathurst St PO Box 4650 or by email at 'secretary@playhouse.org.com'

Recent recipients of Life Membership

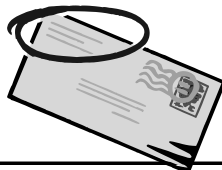
Adela and Moya



Repertoire Contact Details:

Editor: rayq@iinet.net.au

NEW ! PO Box 4650 Bathurst St Hobart 7000





Graham Family

FUNERAL DIRECTORS

BUTLER, McINTYRE & BUTLER

Lawyers
ESTABLISHED 1824

Sandy Bay Living

Bertoz  Z
SHOWCASE JEWELLERS

NEW
SYDNEY
HOTEL

Heather & Christopher
Chong

